

A photograph of two men in a workshop or office setting. The man on the left is wearing a yellow hard hat, glasses, and a white shirt with dark suspenders. He is looking down at a set of blueprints on a table. The man on the right is wearing a blue and white plaid shirt and jeans. He is looking at the blueprints with his hand on his chin, appearing to be in deep thought. The background is slightly blurred, showing what looks like a workshop environment. The entire image has a blue color overlay.

COMPANY PROFILE 2024

Smart Tec Group



CONTEXT

SMART TEC SOLUTIONS
& SMART TEC MECH

SMART TEC FIRE
& SECURITY

SMART TEC NETWORKS

EVOLVE MEP UK

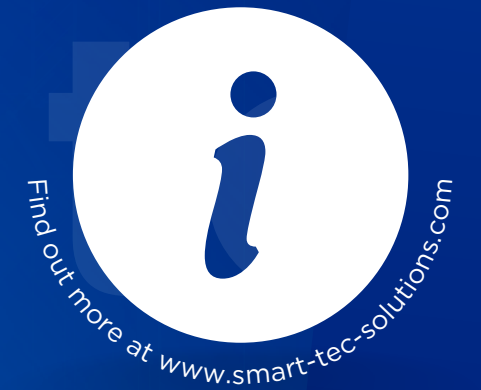
SMART TEC
ENVIRONMENTAL



15556

Welcome to
our Company

An empire of technological engineering with a
nationwide presence.



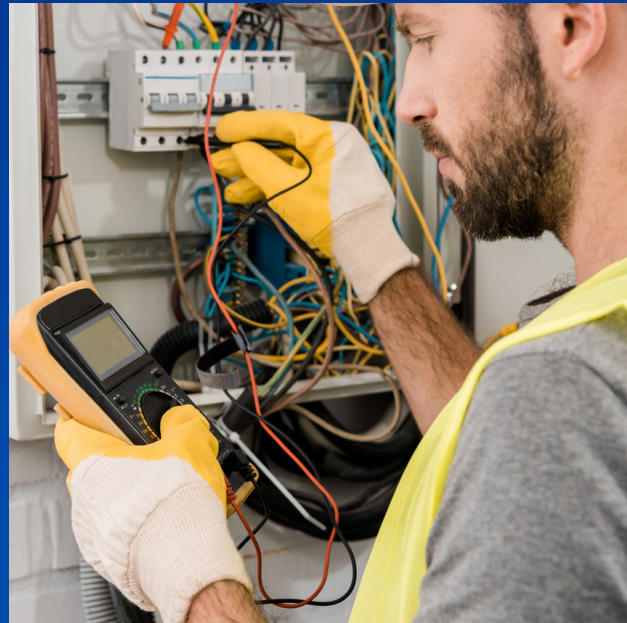
M&E SOLUTIONS →

15556



M&E SOLUTIONS

Smart Tec Solutions and Smart Tec Mech have formed a partnership to offer comprehensive mechanical and electrical solutions across the country. Our in-house experts provides a range of services, including but not limited to:



Inspection and Testing



Electrical Infrastructure and Pre-fabrication Services



Thermal Imaging and Load Balancing



Electrical Surveys



Emergency Lighting Systems Incorporating Automatic Control

MORE →

M&E SOLUTIONS

Smart Tec Solutions and Smart Tec Mech have partnered to provide comprehensive mechanical and electrical solutions nationwide. Smart Tec Group Limited, an extensively accredited MEP enterprise, utilizes award-winning software like HandsHQ and Procore for enhanced project management. Together, we offer a range of services including ISO-certified solutions and access to industry-standard accreditations.



Demonstrating a commitment to quality, we pride ourselves on being a successful MEP enterprise, having completed thousands of projects since establishment. Over the years, we've had the privilege of working with household names such as Marks and Spencer, Lush, and many others. Our services span across the industrial, commercial, and educational sectors, where we bring our expertise and dedication to every project. Smart Tec Solutions achieves success in every project by leveraging specialized knowledge, customized approach, collaborative mindset, attention to detail, adaptability, and commitment to continuous improvement. Applying tailored solutions to meet each client's unique needs, maintaining open communication, and staying adaptable, our engineers ensure the highest standards of quality and value delivery in every endeavour.

Smart Tec Group are committed to delivering excellence and ensuring customer satisfaction. Our track record speaks for itself, showcasing our ability to meet and exceed the expectations of our clients. Focusing on quality and reliability, we have established ourselves as a trusted partner in the industry, ready to tackle any MEP challenge with precision and professionalism.



WORKING WITH



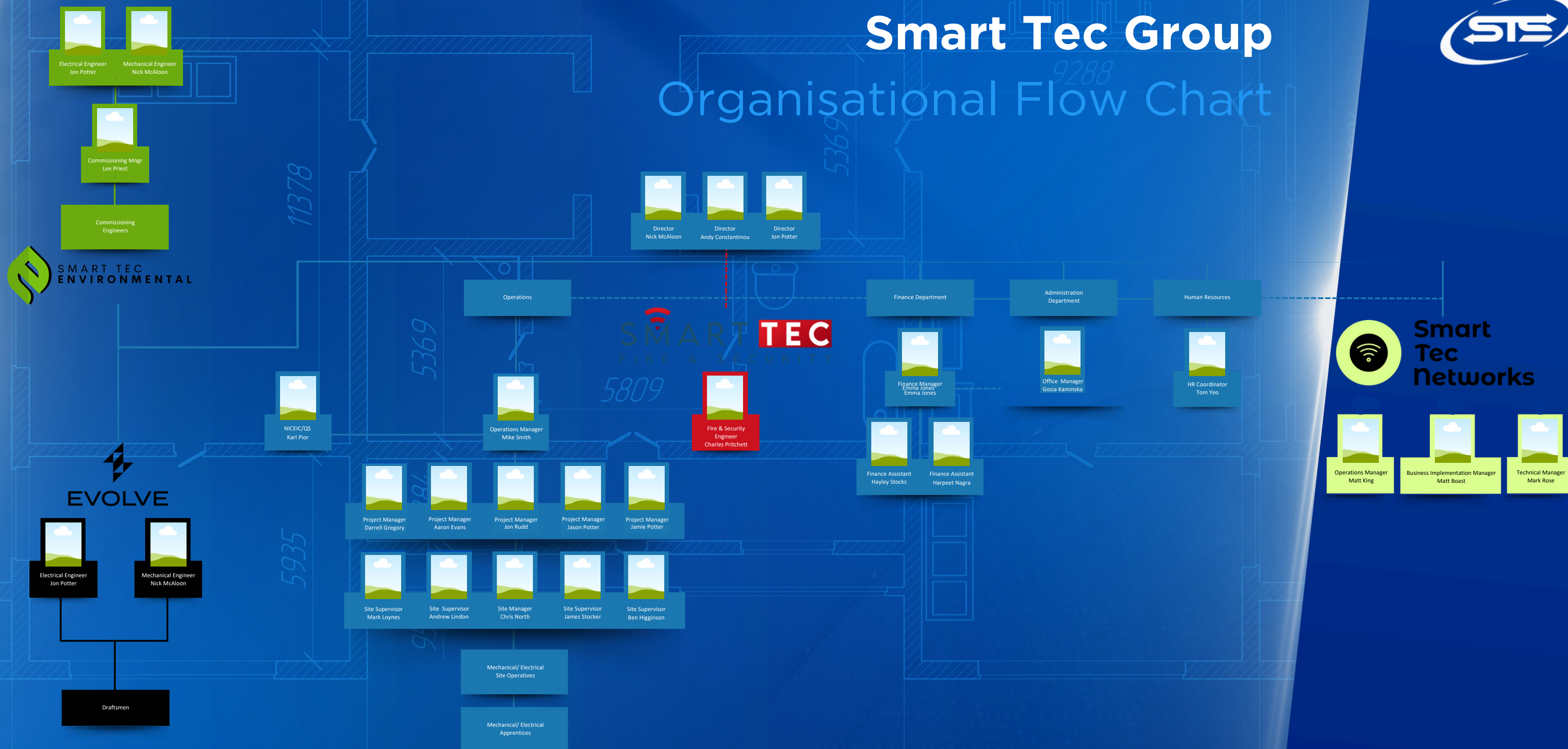
ETC

ORGANISATION
FLOW CHART →



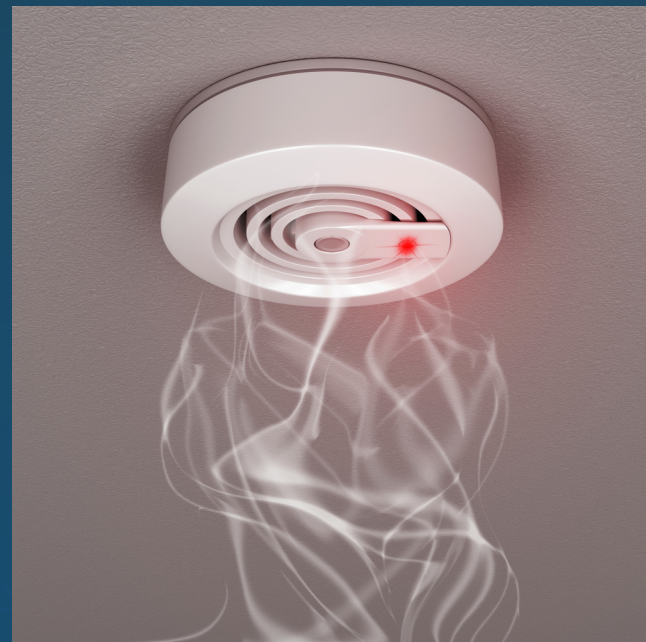
Smart Tec Group

Organisational Flow Chart

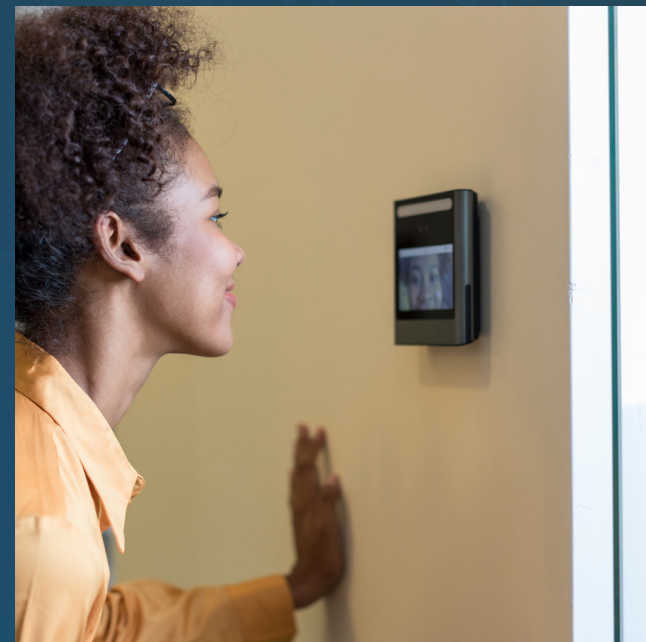


FIRE & SECURITY SOLUTIONS

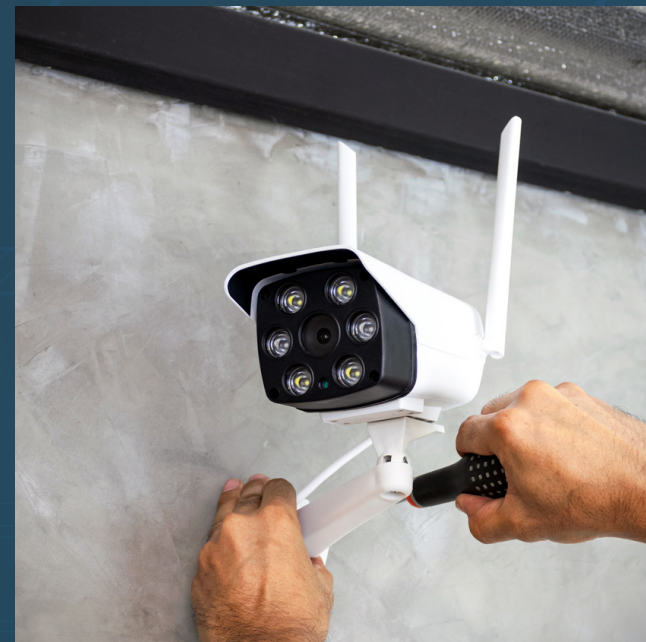
We recognize that safety and security constitute the cornerstone of every infrastructure and enterprise. At Smart Tec Fire & Security, we take immense pride in safeguarding your establishment, irrespective of its size or scale. Whether it's a cosy corner coffee shop or a sprawling global conglomerate, we are committed to fortifying your premises with tailored security solutions designed to meet your specific needs and ensure comprehensive protection.



Fire and Security Response Systems



Face, Fingerprint and Numberplate Recognition



IP and Wireless Security Systems



Controllable and Customisable Access Systems



Remote Access and 24/7 CCTV Monitoring



FIRE & SECURITY SOLUTIONS

Specializing in a wide range of security services, Smart Tec Fire & Security offers products from reputable providers like Hikvision, Panasonic, and Honeywell, covering both traditional and innovative solutions adaptable to various needs. Whether for individual sites or multi-system integration across different scales of businesses, their expert team customizes solutions to precise requirements.

Our mission is to prioritise your business' requirements for safety and security; ensuring you are prepared and protected with the best solutions.

Furthermore, Smart Tec Fire & Security prioritizes a holistic approach to security, considering not only the immediate needs of their clients but also the broader context of potential threats and vulnerabilities. Our seasoned M&E personnel conduct thorough assessments to identify and address any weaknesses in existing security infrastructure, proactively mitigating risks and enhancing overall resilience.

STRUCTURED CABLING SOLUTIONS →



STRUCTURED CABLING SOLUTIONS

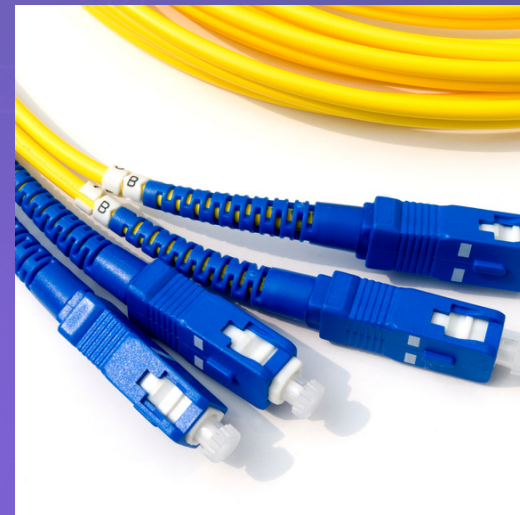
Smart Tec Networks, a part of the Smart Tec Group, delivers comprehensive network support across the UK; including wireless surveys, structured cabling, MAC work, and fibre optic installations. Our CNIDP® qualified team ensures high-quality results, with a focus on meticulous testing and documentation.



Data Cabling



Wireless/ Wi-Fi



Blown Fibre Ducts & Fibre
Optic Cabling



IT Projects & Rollouts



MAC Work



Accredited Specialists

Mastering your technology with structured cabling solutions, network and infrastructure design and more. Qualified members with years of experience in a variety of trade industries.

MORE →

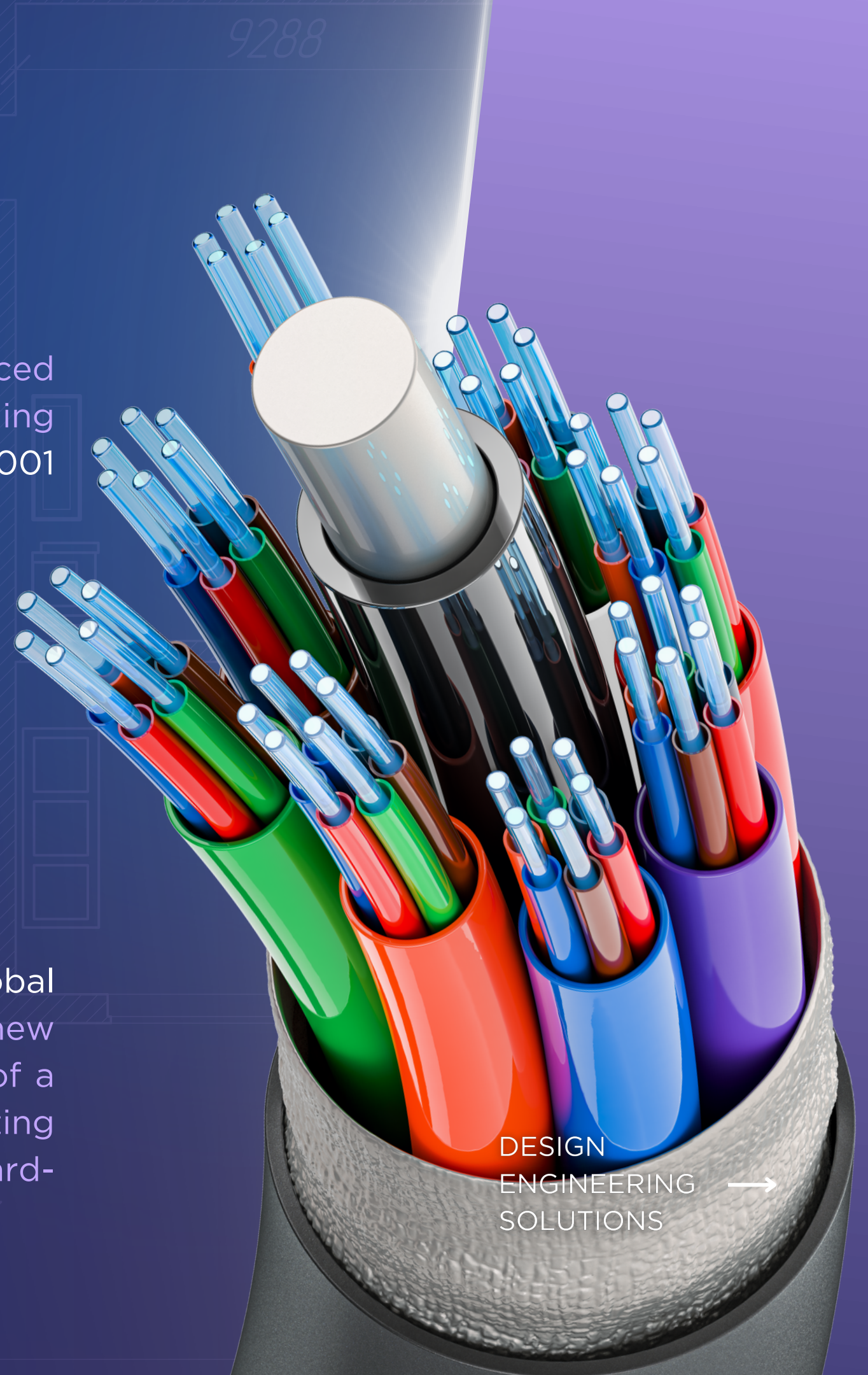
STRUCTURED CABLING

SOLUTIONS

The company's ethos centres on delivering high-quality, competitively priced services achieved through continuous process and policy development, including staff training and procedure monitoring. Holding ISO 27001, ISO 9001, and ISO 14001 accreditations, along with CHAS Accreditation and Safe Contractor Approval.

Mission-critical services to enhance your efficiency, adaptability and technological performance.

Smart Tec Group's reputable brand has facilitated strong relationships with global contractors and sub-contractors, fostering a commitment to building new partnerships. This ethos extends to the Smart Tec Network division, comprised of a hand-picked team with extensive experience in various sectors; emphasizing dedication and collaboration. Alongside Smart Tec Solutions our team utilize award-winning software to ensure quality service delivery.



DESIGN
ENGINEERING →
SOLUTIONS

DESIGN ENGINEERING SOLUTIONS



Evolve MEP Engineering collaborates closely with experienced mechanical and electrical engineering professionals, utilizing advanced design software to provide reliable design engineering services tailored to the industrial, commercial and educational M&E industry. Our expert team ensures high-quality, efficient, and customized solutions, guided by a commitment to innovation and client satisfaction.



M&E Expert Consultation



Budget Consultancy



Up-to-date Advanced Programmes



Commercial Projects; SME to Conglomerate

MORE →

DESIGN ENGINEERING SOLUTIONS

Evolve* is an independent building services design company, partnered with specialist companies in the technological engineering space.

Evolve offers expert consultancy services across various building and engineering sectors, including electrical and mechanical domains. With access to exclusive software, we facilitate a clear, coherent, and comprehensive planning process for all your construction requirements.

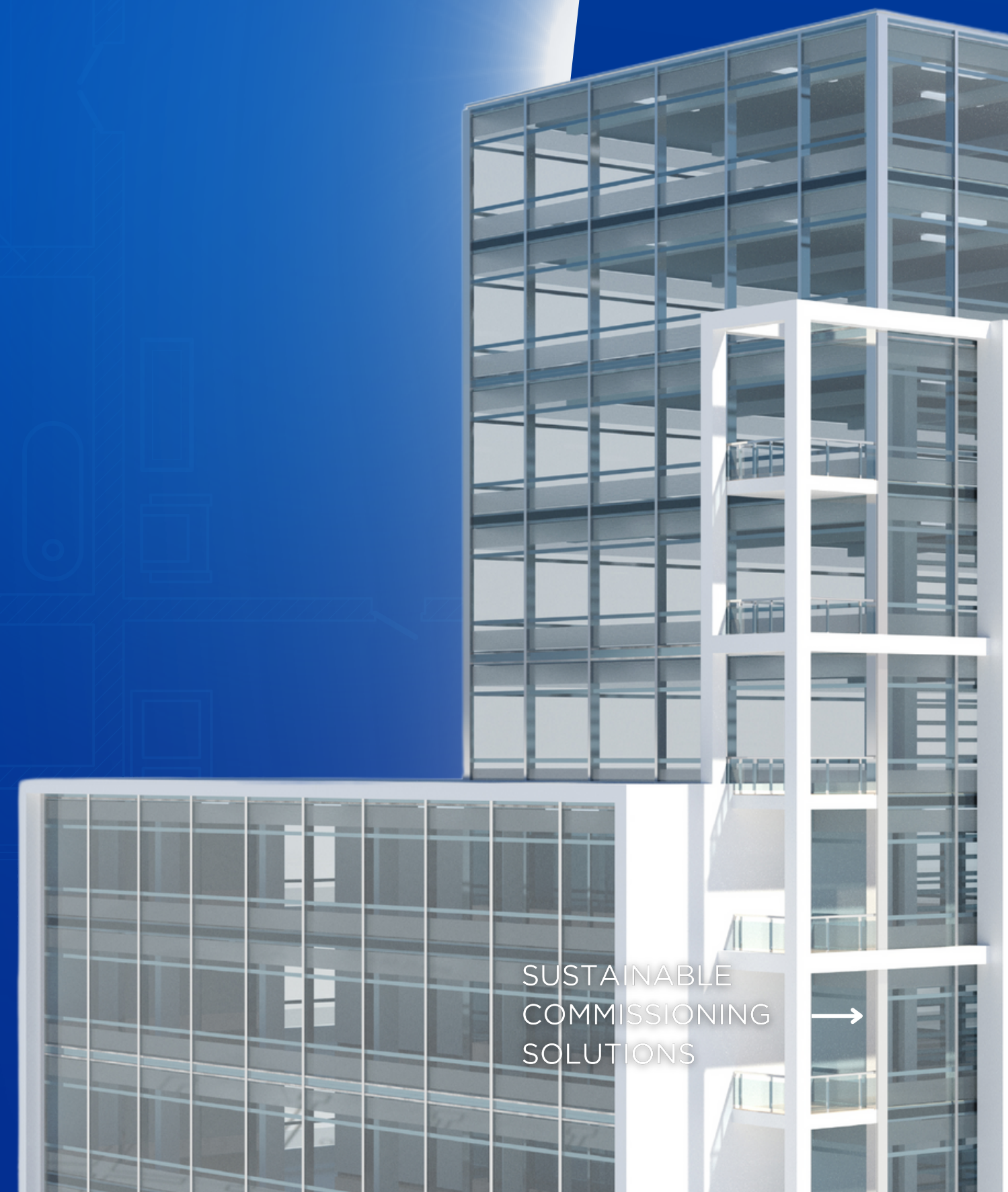
Empowering with innovative, sustainable design solutions.

Unlocking the potential of 2D and 3D design capabilities, we meticulously prepare for detailed projects, ensuring thoroughness in every aspect. Our dedicated team excels in crafting impressive, customized visions for each project, enhancing its overall quality and success.

Our experts possess proficiency across various design engineering applications/software, including AutoCAD, Revit, Trimble, and IES.



SUSTAINABLE
COMMISSIONING
SOLUTIONS →



Sustainable Commissioning Solutions

Smart Tec Environmental is a sustainable survey, commissioning and validation service ensuring your facilities are fortified. Years of experience with MEP facilities have prepared our engineers with the technical knowledge to maintain industrial equipment.



Water Treatment &
Hygiene



HVACR



(Pre) Commissioning

MORE →

Sustainable Solutions

Achieving sustainable practice has been an on-going mission for many global industries. Smart Tec Environmental understands the importance of sustainability and delivering quality services and support for the nation's commercial sector.

Our enterprise has achieved ISO 14001 to monitor and measure environmental performance - to stay true to the company's namesake and contribute to the mission. Our services allow us, and the client, to make informed decisions and encourage sustainability whilst analysing energy consumption and operation-sequence efficiency. This is all in aid of energy efficiency and sustainability.

Commissioning Services

Post installation, MEP facilities require specialist care and expertise in order to remain reliable and regulated, whether it be commissioning or re-commissioning, testing or balancing and surveys or assessments. Such disciplines are to be delivered by our expert Commissioning Managers, HVAC Commissioning Engineers, Clean Air Validation Engineers and Water Treatment and PCC Engineers.





Please contact us for any enquiries...



sales@smart-tec-solutions.com



+44 (0) 121 663 1075



Unit 5 Fort Dunlop, Fort Parkway
Birmingham, West Midlands
B24 9FD

Accredited with*



Constructionline
Gold Member



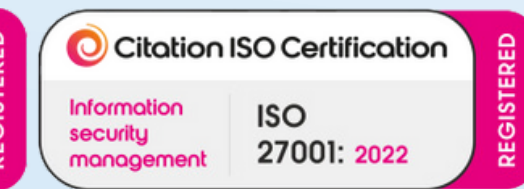
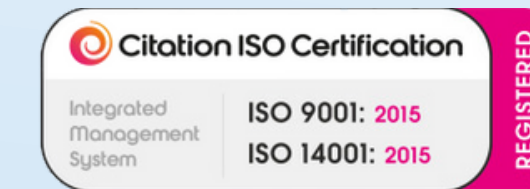
Accredited Contractor
CHAS.co.uk



APPROVED
CONTRACTOR



REGISTERED ORGANISATION
ID: 302213



*ISO 9001 and ISO 14001 have been earned by Smart Tec Group Limited, ISO 27001 has been earned by Smart Tec Networks Limited. BAFE accredited personnel operate within Smart Tec Fire & Security Limited, managed by Smart Tec Group Limited. Exclusively, Smart Tec Networks Limited is accredited with BICSI (are a Corporate Member), Leviton and Excel (are Excel Cabling Partners), as well as ISO 27001. Please enquire for full terms of accreditations.